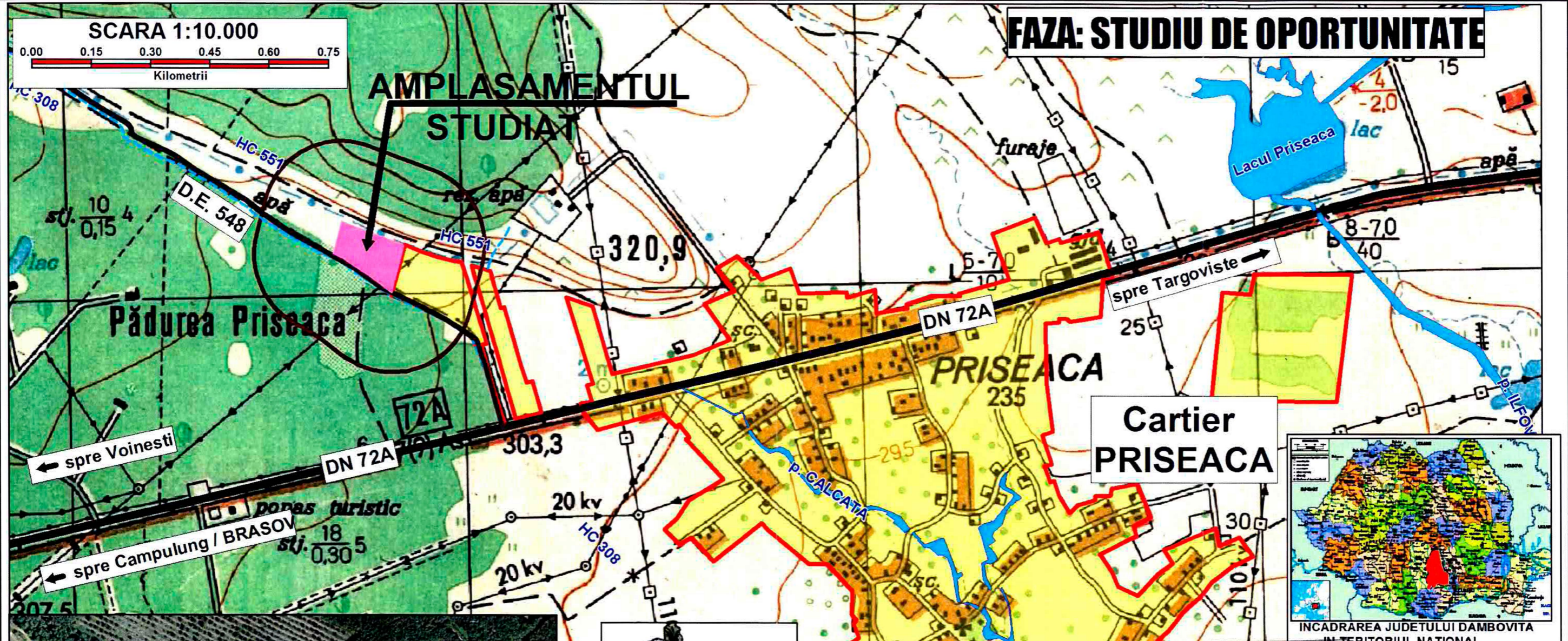
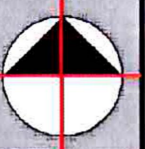
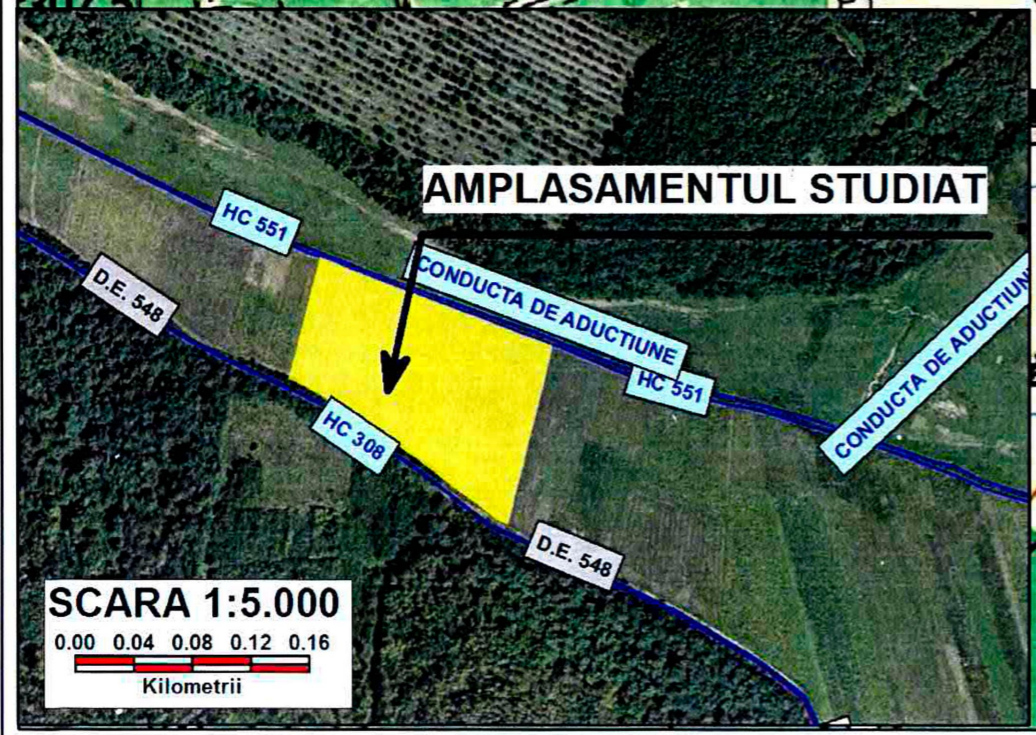
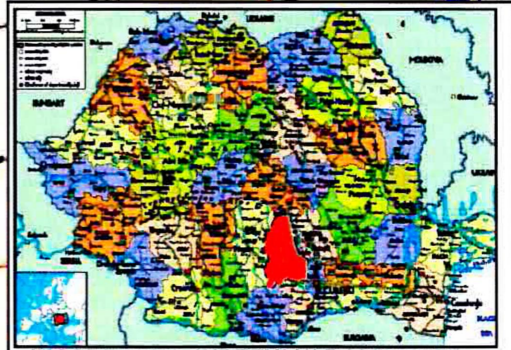
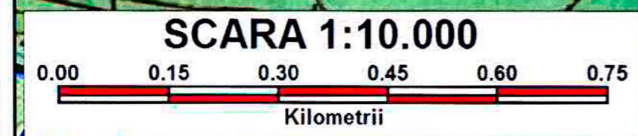


1. INCADRAREA IN TERITORIU

PUZ - EXTINDERE INTRAVILAN SI LOTIZARE TEREN PENTRU CONSTRUIRE LOCUINTE
 Tarla 39, P550/17, 17/1, 18; Municipiul TARGOVISTE; JUDETUL DAMBOVITA



FAZA: STUDIU DE OPORTUNITATE



- LIMITA INTRAVILANULUI EXISTENT
- AMPLASAMENTUL STUDIAT
- CARTIER PRISEACA - LOCUINTE SI FUNCTIUNI COMPLEMENTARE
- CIRCULATIE CAROSABILA PUBLICA MAJORA - DN 72A
- CIRCULATIE CAROSABILA PUBLICA LOCALA, DE ACCES LA AMPLASAMENT - DE 548
- PADURI: PRISEACA
- CANALE HIDROTEHNICE: HC 551, HC 308

 S.C. AREAL DESIGN S.R.L. STR. BARATIEI, NR. 12	Denumire proiect: " PUZ - EXTINDERE INTRAVILAN SI LOTIZARE TEREN PENTRU CONSTRUIRE LOCUINTE		Cod proiect: 2002
	Beneficiar: IORDACHE MIHAI ALEXANDRU, PAVEL DRAGOS ANDREI, LOPATARU LAVINIA IOANA, LOPATARU MANOIL FLORIN, SC IORDANA SRL		Faza: STUDIUL DE OPORTUNITATE
Director	Ing. Silvu Ciofec	Scara	INCADRARE IN TERITORIU
Coordonator	Urb. Doina Petrescu	1:10.000	
Proiectat	Urb. Miruna Chirtescu	Data	
Desenat	Malina Neagu	lan. 2013	Plansa 1

